



Aerial Surveying of Weeds

Carla McKeivitt

What is aerial surveying?



Why map weeds from the air?



Considerations

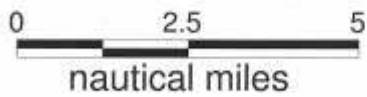
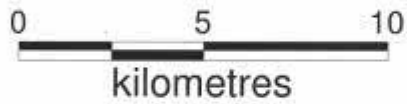
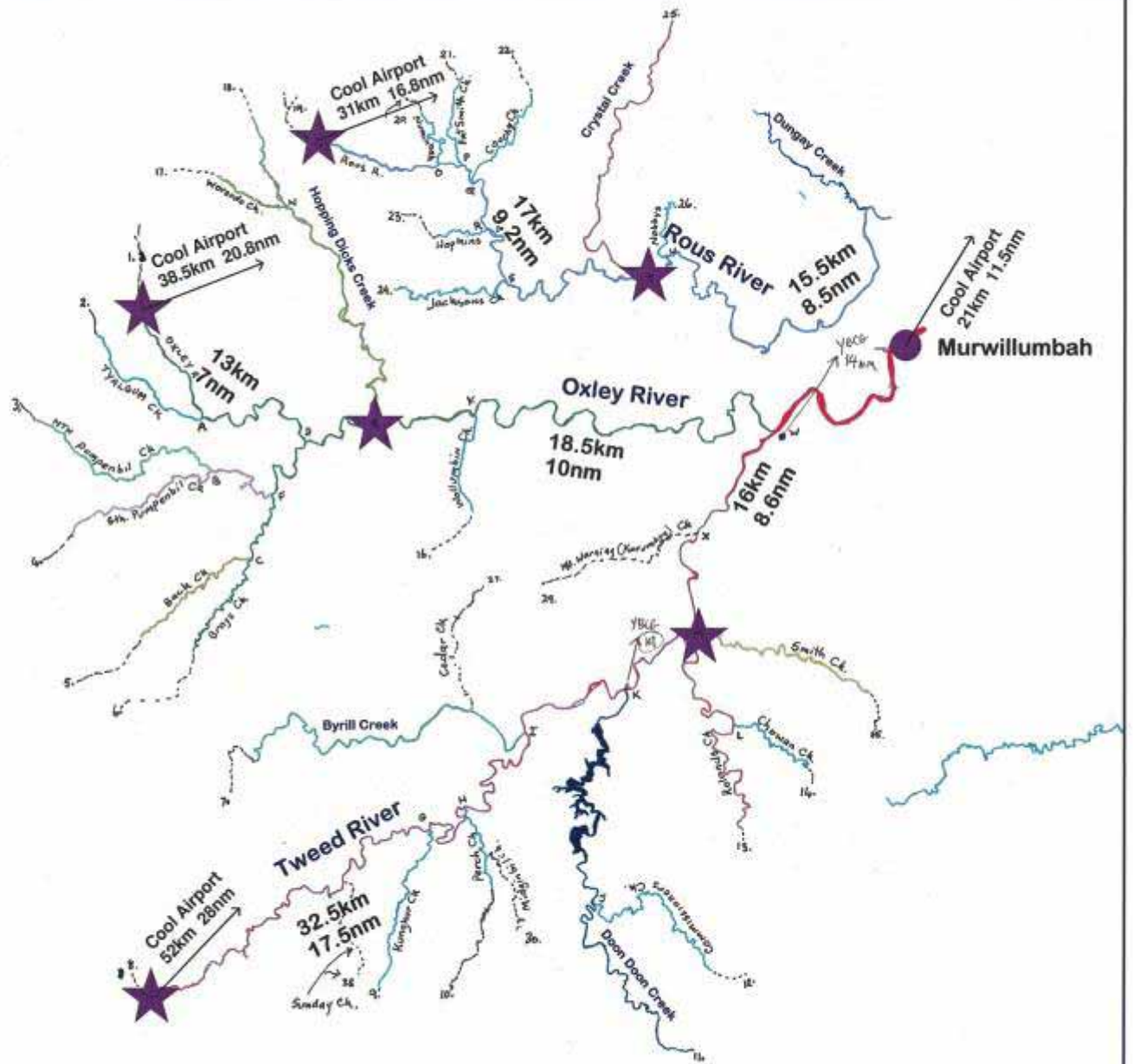
A person wearing a white cap, a white and black t-shirt, and light blue jeans is standing in a field of tall, dry grass. They are holding a drone in their hands, and a teal backpack is visible on their back. In the background, there is a body of water and a dense line of green trees.

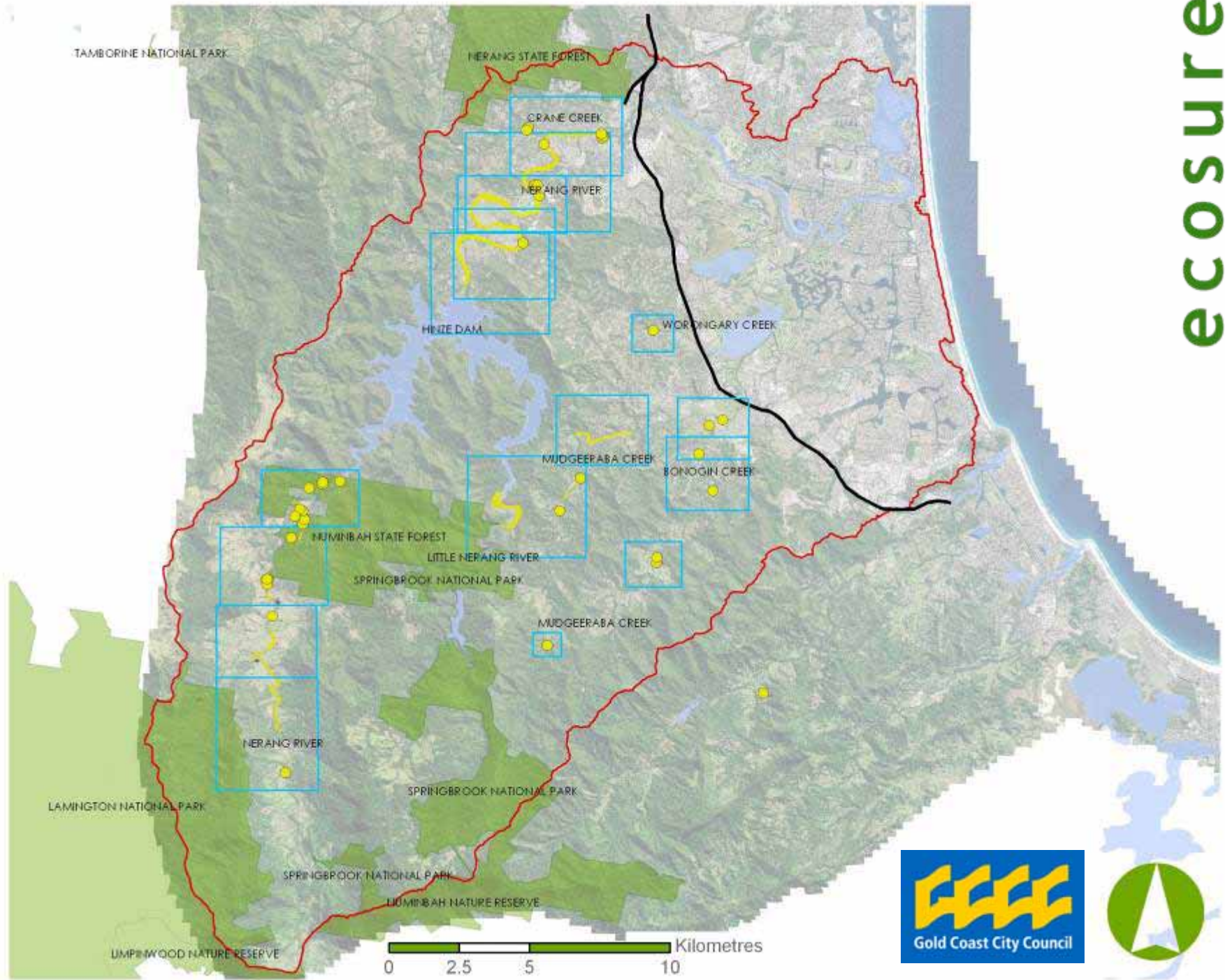
When are the weeds most visible?

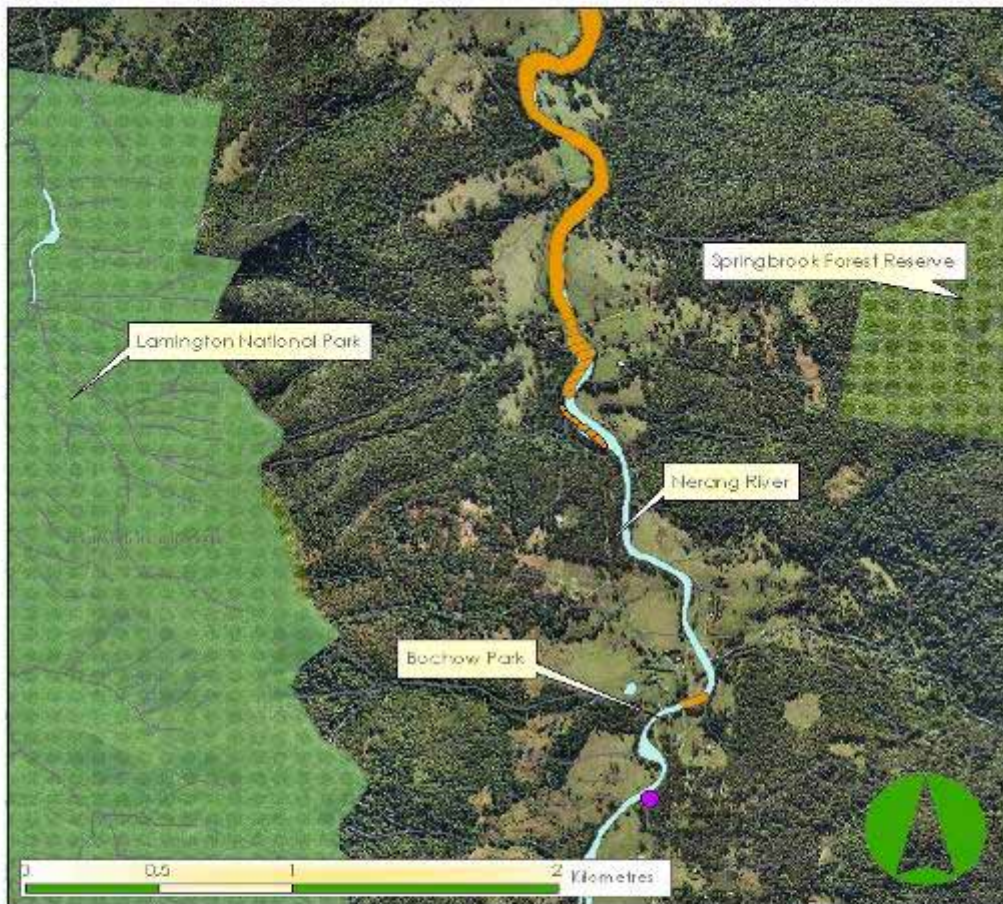
How to map the weed locations accurately?

How to determine whether the data collected is correct?

Tweed Aerial Survey Planning







Map 9 Madeira Vine Study Area 1

- Balloon Vine location
 - MW* isolated moderate patch
 - MW* isolated small patch
 - MW* heavy density
 - MW* moderate density
 - MW* scattered density
 - Waterways
 - National Parks
 - Regional Parks
- Balloon vine (Conocarpium grandiflorum)*
MW = Madeira Vine (Anredera cordifolia)*
 Small patch = $10m$ patch.
 Moderate patch = $10m$ but $120m$ patch.



Notes: This map presents the results of aerial survey.
 All locations are based on the map and are approximate.
 due to GIS inaccuracy (Aerial Photo Base 2004).
 MW* V41_001 Map 9_131000
 PREPARED BY: COLIN GIBSON (GIS) - Ecosure Pty Ltd
 DRAWN BY: COLIN GIBSON (GIS) - Ecosure Pty Ltd
 DRAWING NUMBER: V41_001 Map 9
 DATE: 13/06/2010

Potential applications

- Illustrates the extent of the weed infestations
- Can help to determine where and how to act next
 - Manage the upstream populations of weeds
 - Manage weeds next to National Parks or conservation areas
 - Is public education or action required?

Potential applications

Education tool

Monitoring tool

Issues

- Cost
- Weather dependent
- Highly skilled





Into the future...

ecosure

- Linking of mapped areas

- Remote sensing

Any questions?

ecosure

Carla McKevitt
cmckevitt@ecosure.com.au
07 55082046