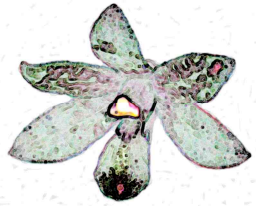


# Strategic D'Aguilar Weed Partnership



MEPA



*Dedicated to a  
better Brisbane*



## Weed-free site



## Weed-free site

- 5 sp. native orchids
- 5 sp. native grasses
- 5 sp. native creeper



## Weed-free site

- 5 sp. native orchids
- 5 sp. native grasses
- 5 sp. native creeper



Signal Grass site

## Weed-free site

- 5 sp. native orchids
- 5 sp. native grasses
- 5 sp. native creeper



**Signal Grass site**  
- 1 sp. weed grass

## Weed-free site

- 5 sp. native orchids
- 5 sp. native grasses
- 5 sp. native creeper



**Signal Grass site**  
- 1 sp. weed grass

**Biodiversity**





Domestic “spillover”

“Repair”



# Community awareness

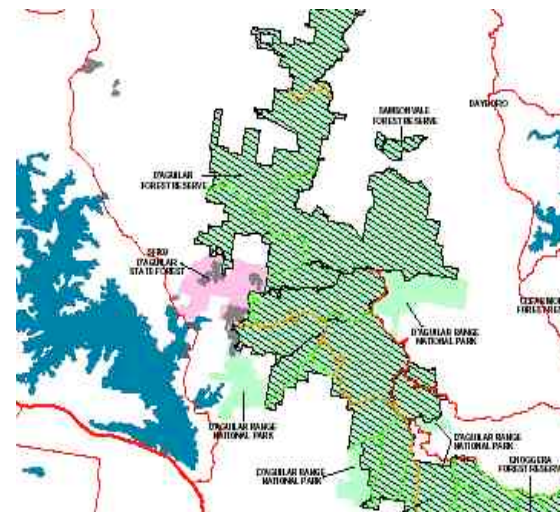


# Tourist Road & Powerlines - working corridors -



# Areas of concern

- Corridors
  - road: 50 kms
  - power corridors: 30+ kms
- D'Aguilar Communities:
  - Mt Nebo
  - Mt Glorious
  - adjoining landholders
- Bordering districts











# Treatment

- **minimum disturbance**  
(no heavy machinery)
- **timely intervention**  
(pre-seeding, during growth period)
- **fastidious follow-up**  
(within seed-cycle)
- **more follow-up ... and more**  
(i.e. never let a site go backwards)

So, (i) skilled, fastidious crew  
(ii) long-term resourcing  
(iii) focused management

# Measurement (now across 482 data points)

- Weed Abundance Indicator

Abundance	Description
minimal	< 10 plants
scattered	< 1 plant/400m <sup>2</sup>
low	> 1 plant/400m <sup>2</sup>
medium	> 1 plant/25m <sup>2</sup>
high	> 1 plant/m <sup>2</sup>

Abundance Modifier	Description
(localised)	Infestation of limited extent; site mostly free of weed in question.

- General Environmental Health Indicator (GEHI)

Considers both state of vegetation & response required by weed workers



Natives dominant & occasional weed monitoring required

Weeds dominant & long term, intensive restoration required

# Reporting (100pp. - bi-annual)

- Basic data

## Authority/Location

Brisbane City > Mount Nebo Rd > McAfees lookout

## Site name

B5-B6

GEHI = General Environmental Health Indicator

3.5

## Site Note

Common Name	Scientific Name	Abundance	Note
Agave	Agave spp.	scattered-high	Crack/dab with glyphosate
Basket Asparagus	Asparagus aethiopicus (syn. A. densiflorus)	scattered	Manually removed.
Black-eyed Susan	Thunbergia alata	scattered	Sprayed.
Camphor Laurel	Cinnamomum camphora	Not found	
Cassia	Senna spp.	scattered	Crack/Cut & dab with glyphosate.
Crucifix Orchid	Epidendrum radicans	Not found	
Glycine	Neonotonia wightii	scattered-medium	Sprayed.
Jacaranda	Jacaranda mimosifolia	Not found	
Lantana	Lantana spp.	high	
Lantana (creeping)	Lantana montevidensis	high (localised)	Sprayed.
Madeira Vine	Anredera cordifolia	medium (localised)	Manually removed/sprayed.
Mother-of-Millions	Bryophyllum spp.	high	Sprayed (incomplete)
Signal Grass	Urochloa decumbens	high (localised)	Sprayed.

# Reporting (100pp. - bi-annual)

- Basic data

**Authority/Location**

Brisbane City > Mount Nebo Rd > McAfees lookout

**Site name**

B5-B6

GEHI = General Environmental Health Indicator

**3.5**

**Site Note**

<b>Common Name</b>	<b>Scientific Name</b>	<b>Abundance</b>	<b>Note</b>
Agave	Agave spp.	scattered-high	Crack/dab with glyphosate
Basket Asparagus	Asparagus aethiopicus (syn. A. densiflorus)	scattered	Manually removed.
Black-eyed Susan	Thunbergia alata	scattered	Sprayed.
Camphor Laurel	Cinnamomum camphora	Not found	
Cassia	Senna spp.	scattered	Crack/Cut & dab with glyphosate.
Crucifix Orchid	Epidendrum radicans	Not found	
Glycine	Neonotonia wightii	scattered-medium	Sprayed.
Jacaranda	Jacaranda mimosifolia	Not found	
Lantana	Lantana spp.	high	
Lantana (creeping)	Lantana montevidensis	high (localised)	Sprayed.
Madeira Vine	Anredera cordifolia	medium (localised)	Manually removed/sprayed.
Mother-of-Millions	Bryophyllum spp.	high	Sprayed (incomplete)
Signal Grass	Urochloa decumbens	high (localised)	Sprayed.

# Reporting (100pp. - bi-annual)

- Basic data

**Authority/Location**

Brisbane City > Mount Nebo Rd > McAfees lookout

**Site name**

B5-B6

GEHI = General Environmental Health Indicator

3.5

**Site Note**

<b>Common Name</b>	<b>Scientific Name</b>	<b>Abundance</b>	<b>Note</b>
Agave	Agave spp.	scattered-high	Crack/dab with glyphosate
Basket Asparagus	Asparagus aethiopicus (syn. A. densiflorus)	scattered	Manually removed.
Black-eyed Susan	Thunbergia alata	scattered	Sprayed.
Camphor Laurel	Cinnamomum camphora	Not found	
Cassia	Senna spp.	scattered	Crack/Cut & dab with glyphosate.
Crucifix Orchid	Epidendrum radicans	Not found	
Glycine	Neonotonia wightii	scattered-medium	Sprayed.
Jacaranda	Jacaranda mimosifolia	Not found	
Lantana	Lantana spp.	high	
Lantana (creeping)	Lantana montevidensis	high (localised)	Sprayed.
Madeira Vine	Anredera cordifolia	medium (localised)	Manually removed/sprayed.
Mother-of-Millions	Bryophyllum spp.	high	Sprayed (incomplete)
Signal Grass	Urochloa decumbens	high (localised)	Sprayed.

# Reporting (100pp. - bi-annual)

- Longitudinal GEHI data

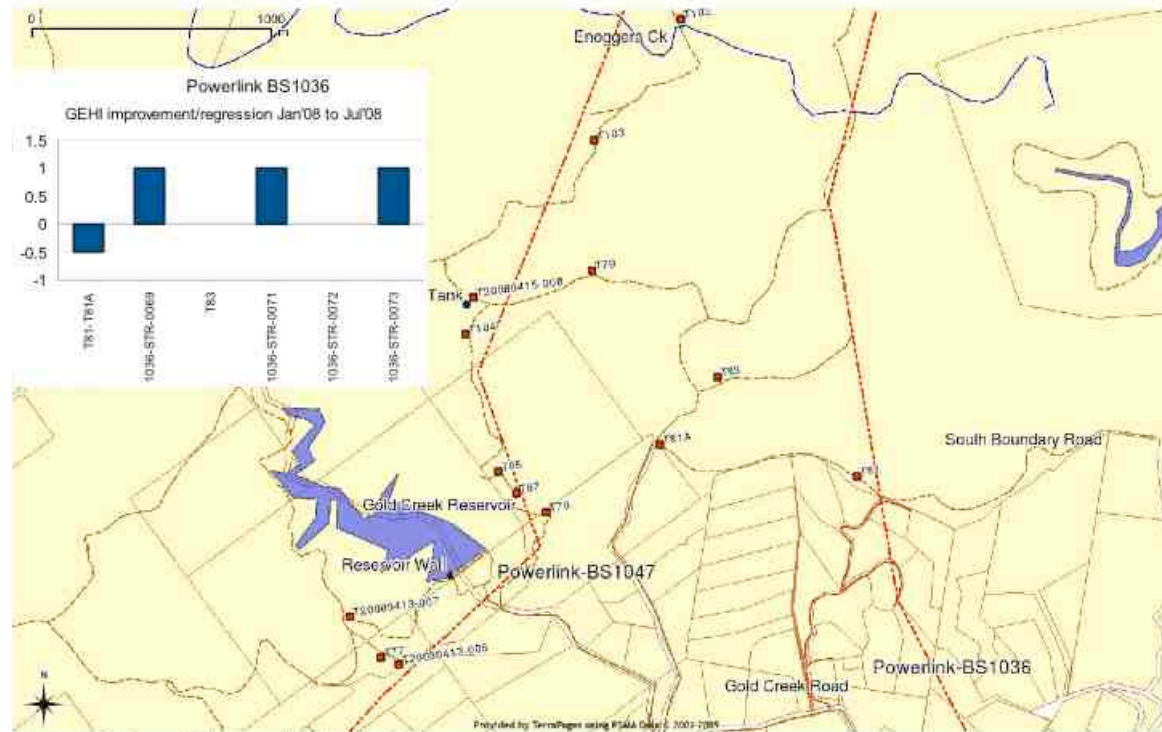


Illustration 2: Powerlink lines south of Mt Nebo Rd.

# Reporting (100pp. - bi-annual)

- Satellite Imagery (Google Earth)

